

OFS-355 Download Manager Getting Started

Installing and running for Version 2.70 and following

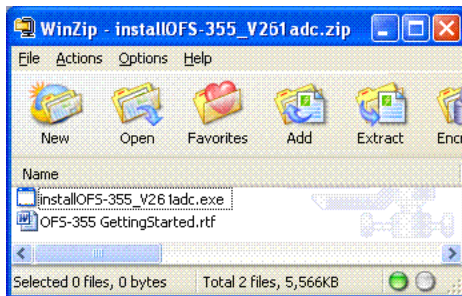
The following procedure outlines how to install and start the OFS-355 Download Manager.
Please read the entire procedure **BEFORE** starting.

1. System Requirements

- Operating System: Microsoft Windows Seven
Microsoft Windows Vista
Microsoft Windows XP
- Application: Microsoft Excel 2003 or higher

2. Installing the OFS-355 Download Manager


- 1 Open the zip file containing the OFS-355 installation software.
- 2 Double click on < installOFS-355_Vxxx.exe>. You will be guided through the installation process.




Note: You need administrator privileges to install the OFS-355 software on your computer.

Note: The installer will first remove any older version of OFS-355 if you accept when prompt. The installation process will then have to be invoked a second time.

3. Connecting the instrument

- 1 Use a proper USB cable to connect the JDSU SmartClass, SmartPocket or C-series device to any one of your computer's USB ports.
- 2 Turn your device ON. 
Note: The USB connect provides DC power to the device.

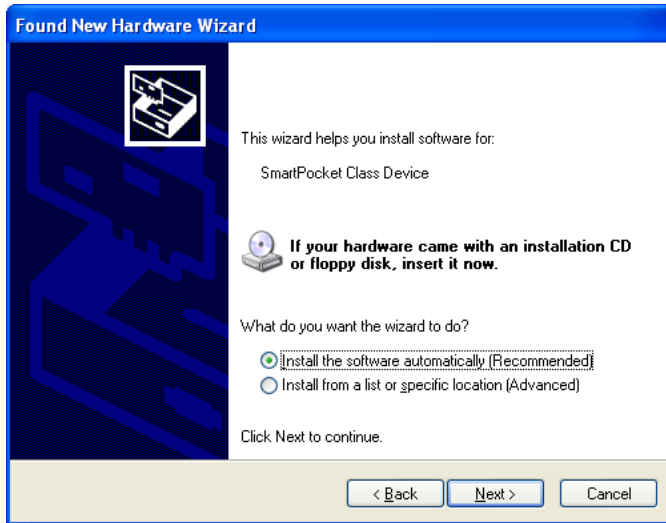
 **Do NOT close** the "Found New Hardware" info box provided by MS Windows. Please wait for the "Found New Hardware Wizard" dialog to pop up.

4. Installing the USB Serial Ports Driver:

- 1 Select the option "No, not this time". Then click "Next"

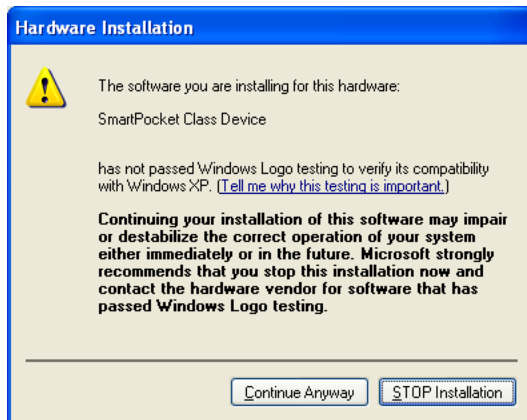


2. Select the option “Install the software automatically”. Then click “Next”.



3. Wait until the “USB Serial Ports Driver (JDSU)” has been found.

Note: JDSU did not book for Microsoft Windows Logo testing, so we recommend overriding the “Hardware Installation” warning. Just press “Continue Anyway”. This warning window can come up several times.



4. For the JDSU SmartPocket series (OLP-3x) a second driver has to be installed, thus the same installation process is required. Please go back to step 1 of this paragraph.

Note: With current 2.70 (and following) version of the software you might be asked to install USB driver for every port you use. For more convenience we recommended to use the same port as much as possible.

5. Running the OFS-355 Download Manager

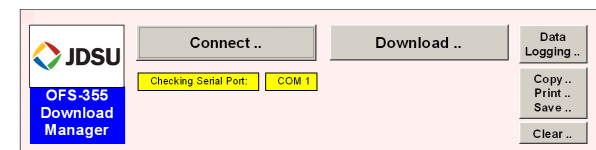
1. To start the software:
- Browse “Start => Programs => JDSU => SmartClass OFS-355 => SmartClass OFS-355 Download Manager x.xx”.
 - Use the desktop icon

Note: Macros have to be enabled in Microsoft Excel to actually download any measurement data. The security level on the macro must be medium or low in order to allow the software to run. Go to Tools=>Macros=>Security, in order to set it correctly.

2. On the software, Click on the **Connect ..** button to establish and verify the USB connection.

3. Select the device type you have connected to the PC between SmartClass/SmartPocket/C-Series

4. Click on the **Download ..** button to start downloading the measurement data from your JDSU device to the PC.



For further information see r the “OFS-355 Manual”
(Download the new version of OFS-355 software for free on www.JDSU.com)