



IBC™ Cleaner



1. Select the appropriate cleaning tool for the connector type.
2. Pull off the **guide cap**.

DRY CLEAN

3. Insert the cleaning tool into the bulkhead adapter and **push the cleaner into the bulkhead 2 times (2 clicks)**.

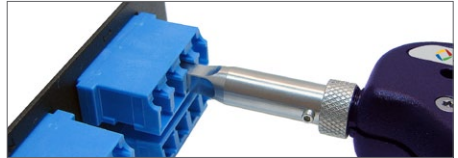
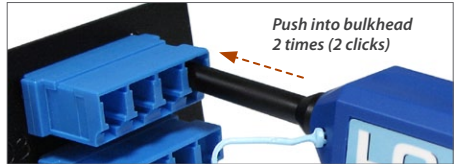
Note: For hard-to-reach places, push the **nozzle extender lock** and pull the **nozzle** out.

INSPECT

5. Determine whether **clean or dirty**.
 - If **clean**, **do not touch it** and **CONNECT**.
 - If **dirty**, either repeat **DRY** cleaning or go to **WET** → **DRY** cleaning.

WET → DRY CLEAN

6. Apply fiber optic cleaning solution onto a clean fiber wipe.
7. Dab the cleaning tool onto the wet area of the wipe to moisten the cleaning tip, then **go to STEP 3**.



Repeat steps 3, 4, and 5 if necessary.



IBC™ Cleaner



1. Select the appropriate cleaning tool for the connector type.
2. Pull off the **guide cap cover**.

DRY CLEAN

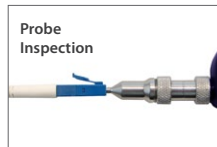
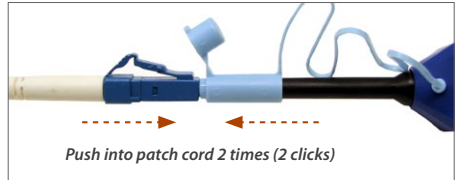
3. Attach the cleaning tool to the connector and **push the cleaner into the patch cord 2 times (2 clicks)**.

INSPECT

5. Determine whether **clean or dirty**.
 - If **clean**, **do not touch it** and **CONNECT**.
 - If **dirty**, either repeat **DRY** cleaning or go to **WET** → **DRY** cleaning.

WET → DRY CLEAN

6. Apply fiber optic cleaning solution onto a clean fiber wipe.
7. Wipe the end of the fiber connector on the wet area of the wipe, then **go to STEP 3**.



Repeat steps 3, 4, and 5 if necessary.