

The Observer Professional is Volicon's newest compliance logging and media monitoring solution designed specifically for budget-conscious television and radio stations, municipalities, military, and public relations markets that routinely consume, interact and respond to electronic media reports. Observer Pro brings broadcast-quality video logging and intuitive scheduling tools to media-monitoring applications directly to your office, immediately and without expensive per-clip fees or subscription costs.

Powered by Volicon's award-winning video storage and search technology, Observer Pro can either continuously record and index up to four channels of broadcast content 24/7 or utilize the embedded scheduled recording module to select specific upcoming programming by date and time. Using any standard web browser to access your Observer Pro server, operators can quickly find subject mentions and media coverage of issues critical to your organization's operations. Whether it's used to track local and national news coverage, late breaking events, or monitor aired advertising content, Observer Pro enables you to respond quickly and effectively.

Volicon Observer™ Professional

With a completely new redesigned, flexible web user interface based on Microsoft Silverlight® technology, this new framework enables Observer to become a cross-browser and cross-platform solution, delivering greater portability and ease-of-use on your system of choice. This new version will support Windows and Mac® operating systems as well as Microsoft Windows Internet Explorer®, Apple Safari®, Google Chrome® and Mozilla Firefox® web browsers along with integrated capabilities for exporting video files to .ASF, H.264, Flash, MPEG-2, or MPEG-4 formats.

Key Benefits:

- **Powerful Development Platform** - with a new framework architecture based on Microsoft Silverlight®, this will provide increased portability, usability and performance
- **Room to Grow** – flexible options to add on modules, channels, and users are now much easier depending on the needs and budget of your facility
- **Increased productivity tools** - new streamlined user interface with zoom controls, mouse hover for copying closed caption text and window pinning options to organize your workspace



The Observer Professional also features the latest enhancements to the Observer's search capabilities, including both simple and advanced search queries, auto-complete search of closed-captioned text, sub-clips, or programs along with an intuitive navigation workflow to find content quickly and efficiently. The Observer Professional supports one to four channel inputs and up to ten concurrent users, and offers up to 90 days of storage for SD Analog archived video. In addition, the Observer Professional includes a revamped electronic programming guide (EPG)-based Scheduled Recording Module for scheduled, selective recording of specific broadcast channels within designated time periods.



Home page for Observer Professional

Key Benefits: (continued)

- **Robust advanced search engine** - with new auto-complete feature for easier location of keywords and adjustable refinement of Closed Caption text queries
- **Unsurpassed portability** – choice of either PC or Mac operating system, plus support for all leading web browsers– Internet Explorer, FireFox, Chrome and Safari
- **Selective Recording Content** - with the new embedded Scheduled Recording module, finding upcoming programs to schedule and record is now incredibly simple
- **No client software installation required** – easy connect via Silverlight plug-in to enable your choice of web browsers
- **Easy, Out of Box Experience** – extremely easy to learn and deploy
- **Lower cost per channel** - affordable, streamlined solution for your Enterprise

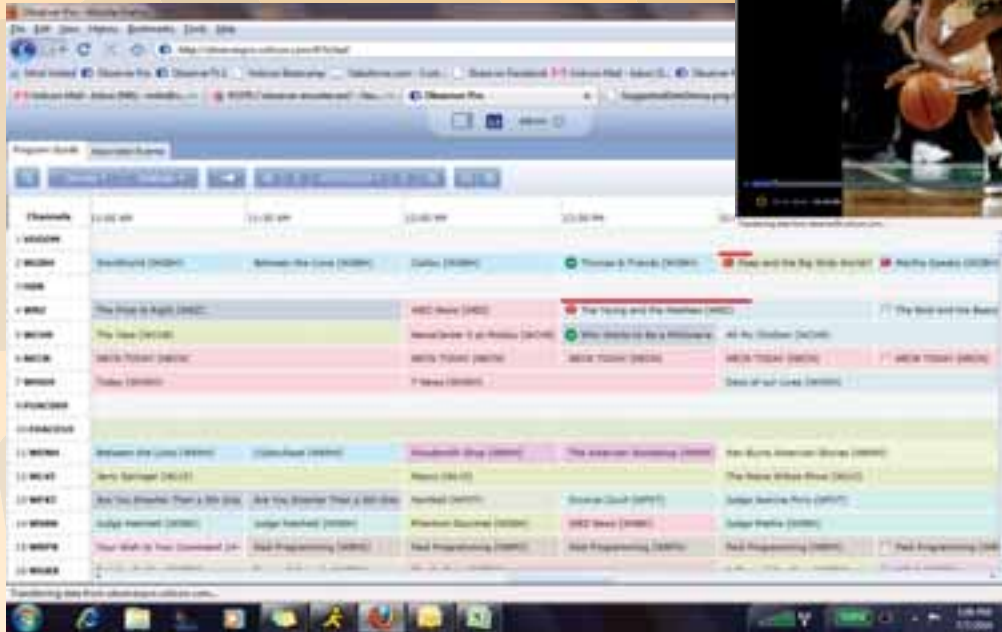
Key Features:

- Revamped EPG - based Scheduled Recording Module that includes embedded search, date and time zoom controls, and the ability to playback recorded content instantly
- Advanced search interface including auto-complete
- Immediate access of recorded content to search, analyze, stream and review -anytime, anywhere in the world
- Quick export of recorded assets to .ASF, H.264, Flash, MPEG-2 and MPEG-4
- Support for PC or Mac operating systems
- Multiple web browser support - Internet Explorer, FireFox, Chrome, Safari supported
- Proactive keyword alerts via email, SMS
- Intuitive sub-clipping tools to quickly cut, rename, add comments, and mail to workgroup

Observer Professional *Inside look at a glance*



Closed caption text display window



Scheduled Recording Module

Observer Professional is a new, Microsoft Silverlight® - based media monitoring and logging product that leverages the award-winning features of Volicon Observer Enterprise. Its streamlined user interface on either PC or Mac operating systems using any standard web browser includes:

- Home page orientation with modal dialog windows, graphical overlay buttons, and easy access to core functional areas
- Intuitive video scrub bar with thumbnail frames
- Clear mark in, mark out and clear point buttons for sub-clipping
- Familiar player controls
- Adaptive zoom control settings to expand timeline view along with capability to switch to any date and time or Live TV to find content
- Convenient pull-down menu for switching channel feeds
- Quick bookmark menu from the timeline
- Fast export option to convert Windows Media assets to .ASF, Flash, H.264, MPEG-2, or MPEG-4
- Adjustable audio loudness meter
- Closed Captioning Text, Search, Scheduled Recording and settings all accessible on home page

Observer Professional provides instant access to closed caption text for monitoring and copy. Its features include:

- One click access to embedded closed caption text display window
- Mouse hover text feature to show thumbnail images when needed
- Options to enable and disable displays for thumbnails and time code
- Intuitive copy and paste workflow for writing news copy in a text editor
- Pinning option for easier workspace management

Observer Professional includes a powerful, indexed search engine to quickly find your content. Primary features include:

- Option to switch between simple search and advanced search
- Auto-complete search technology to assist with automatic updates to refine your search criteria
- Keyword, date, time, and channel filters to refine your queries
- Ability to search across clips, closed caption text, and recorded programs, either independently or all in the same search
- Simple page navigation for faster results

Observer Professional Workflow:



Schedule Records

EPG-based Scheduling Tools:

Schedule selected programs by title, date, or time to record as a single or repeatable occurrence



Advanced Search

Auto-complete search engine:

Choice of simple or advanced search with auto complete technology to assist with searches



Scrub & Clip

Video Scrub and Clip:

Eliminates guesswork by smooth scrub navigation in stream with scrub and clipping tools



Export

Quick Export Options:

Easy quick export button for exporting your assets for review and approval

Professional

OBSERVER Professional Technical Specifications

Feature	1 CH Analog SD	2CH Analog SD	4CH Analog SD	1 CH HD SDI
Model	1 CH Analog SD	2CH Analog SD	4CH Analog SD	1 CH HD SDI
Video Inputs ¹	1	2	4	1
Chassis Type	1U	1U	1U	1U
Redundant Storage	RAID-1 Swappable HDD	RAID-1 Swappable HDD	RAID-1 Swappable HDD	RAID-1 Swappable HDD
Standard Storage ² (Days)	90	90	60	90
Search Engine Module	Standard	Standard	Standard	Standard
Scheduled Recording Module	Option	Option	Option	Option
Central Server ³	Option	Option	Option	Option
Simultaneous Users ⁴	10	10	10	10
Network Ports	Dual Gig-E	Dual Gig-E	Dual Gig-E	Dual Gig-E
Closed Captioning Support (Feature)	Closed Captioning (NTSC) and Teletext (PAL)	Closed Captioning (NTSC) and Teletext (PAL)	Closed Captioning (NTSC) and Teletext (PAL)	

- ¹ Analog inputs include 2-channel (stereo) audio.
- ² Specified storage assumes VHS-like quality settings at 512 kb/s
- ³ Central server is required for systems configurations of more than 6 channels
- ⁴ Units are shipped standard with 10 users, contact your local sales rep for additional users

Observer Professional Hardware Server Specifications

Component	Specification Details
Form Factor	1RU Rack Mountable Chassis
Dimensions	Height 1.7" (43mm) Width 16.8" (426mm) Depth 14" (356mm)
Weight	20 lbs (25kg)
Power Supplies	1
Power Requirements	260W
AC Voltage	100-240 VAC 50-60Hz 4A Max
I/O	1,2, or 4 Analog SD or 1 HD-SDI I/O with 2 channels of stereo audio
Operating System	Windows 7

Client Specifications

Component	Specification Details
Concurrent Users	10 user seat license
Operating System	Win XP SP2, Vista, Win 7 & Mac OS X 10.4.8+
Web Browsers Supported	Microsoft Internet Explorer v7 & v8, Mozilla Firefox v3+, Apple Safari v4, and Google Chrome
Recommended CPU specifications	2.0 Ghz Pentium or greater, 2 GB RAM, nVidia/ATI video card, Windows Media player 11 or greater, Microsoft Silverlight plug-in (required)

